



Fi rePubl i sher

FirePublisher Installation Manual and User's Guide

firepad



Firepad, Inc

Information in this document is subject to change without notice. No part of this document may be reproduced or transmitted in any form or by any means, electronic or mechanical, for any purpose, without the express written permission of Firepad, Inc ("Firepad").

© 2000 Firepad, Inc. All rights reserved.

Firepad, FirePublisher and FireViewer are either registered trademarks or trademarks of Firepad, Inc. in the United States and/or other countries.

Firepad may have patents or pending patent applications, trademarks, copyrights or other intellectual property rights covering subject matter in this document. The furnishing of this document does not give you any license to these patents, trademarks, copyrights or other intellectual property rights except as expressly provided in any written license agreement from Firepad.

Palm, Palm Computing Platform and HotSync are trademarks of Palm, Inc.
Sony and CLIE are trademarks of Sony Ltd.
Handspring, Visor and Prism are trademarks of Handspring, Inc.
TRG and TRGPro are trademarks of TRG, Inc.

Contents

I. Introduction	6
About Firepad	7
What you get	7
Who this manual is written for	7
System requirements	7
Handheld devices supported	8
Device client software	8
II. Installing FirePublisher	9
InstallShield	10
Web Administrator's Interface Installation	11
Web server access restrictions	11
Advanced Restriction	12
Tell FirePublisher to use a proxy	13
User software generation and installation	13
III. Using FirePublisher Web Administration	14
Web Administration	15
FirePublisher Configuration	15
User Profile Administration	15
<i>i.</i> User Profile	16
<i>ii.</i> User Bookmarks	17

IV. Using FireViewer	18
InstallShield	19
Get Started	19
Main View	19
Main View Menu Items	19
View Images	22
View Hypertext Documents	23
View Videos	23
FireConverter and VideoConverter	24
Where to Find Images on the Internet	25
Create Custom Maps for FireViewer from the Internet	25
V. Appendixes	26
A. FHTML Specification	27
FHTML support in FirePublisher 1.0	27
Paragraphs	27
Line Breaks	27
Ordered and Unordered Lists	27
Hyperlinks	28
Images	28
Image Maps	29
Frames	29
Title	30
Base	30
Entities	30
Other non-recognized tags	30
B. FireViewer 5.2 Notes	31

Internet and FireViewer 5.2	31
Palm VII or VIIx and FireViewer 5.2	31
Memory Card and FireViewer5.2	31
C. Support	33

I. Introduction

FirePublisher is the leading enterprise server application suite for converting and transmitting text and graphics out to handheld devices. FirePublisher will enable Palm based access of a corporate intranet containing — technical documentation, a graphics-rich web site, or a sales presentation — with no loss in resolution, clarity, or navigability. FirePublisher sets a new benchmark for enterprise-calibre handheld publishing — it's cost efficient, easy to deploy and the recognized leader.

- ❑ About Firepad
- ❑ What you get
- ❑ Who this manual is written for
- ❑ System requirements
 - Handheld devices supported
 - Device client software

About Firepad

Founded in 1997, Firepad is based in the heart of Silicon Valley. As a pioneer in the delivery of multimedia to handheld devices, Firepad has the de facto standard for two-dimensional large images, videos and text on the Palm Computing Platform. Our award-winning technology is used by publishers, document-intensive organizations, original equipment manufacturers, business users and consumers and is endorsed by leading enterprises worldwide.

Our products include FireProducer, FirePublisher, FireConverter and FireViewer.

Firepad, Inc.

The Firepad Building

625 Ellis Street, Suite 100

Mountain View, CA 94043

What you get

- CD-ROM containing the FirePublisher installer and 6 additional Perl scripts, as well as the FireAuth executable file.
- Manual
- Windows FirePublisher control application
- The ability to convert and transmit text and graphics out to handheld devices. Documents published on the Internet or a corporate intranet can be published for viewing with a Palm!

Who this manual is written for

Systems Administrator or any IT expert who knows how to configure a web server and to administer a Windows NT system.

System requirements

The following is required to run FirePublisher.

- Windows NT version 4.0 with Service Pack 3 or later
- 133 MHz Intel Pentium-based hardware
- 128MB RAM

- ❑ 60MB disk space
- ❑ CD-ROM drive

Optional (for web interface)

- ❑ Perl Interpreter installed (Available at <http://www.activestate.com>).
- ❑ Any web server with a cgi-interface (for example, the freely downloadable Apache server at <http://www.apache.org>, download the most current release from the `binaries/win32` directory).

After basic installation, you can install an additional web administration that allows you to configure user accounts. The optional components are needed for that particular setup.

Handheld devices supported:

All Palm OS devices, including units from Franklin Covey Co., HandSpring, IBM, Palm, Qualcomm, Sony, Supra Products, Symbol Technologies, TRG Products and QUALCOMM, running PalmOS v.3.0 or later releases.

Device client software:

FireViewer 4.0 or later.

II. Installing FirePublisher

These sections contain information on installing and configuring FirePublisher to your system. You may choose between the two system modes to operate FirePublisher.

- InstallShield
- Web Administrator's Interface Installation
- Web server access restrictions
- Advanced Restriction
- Tell FirePublisher to use a proxy
- User software generation and installation

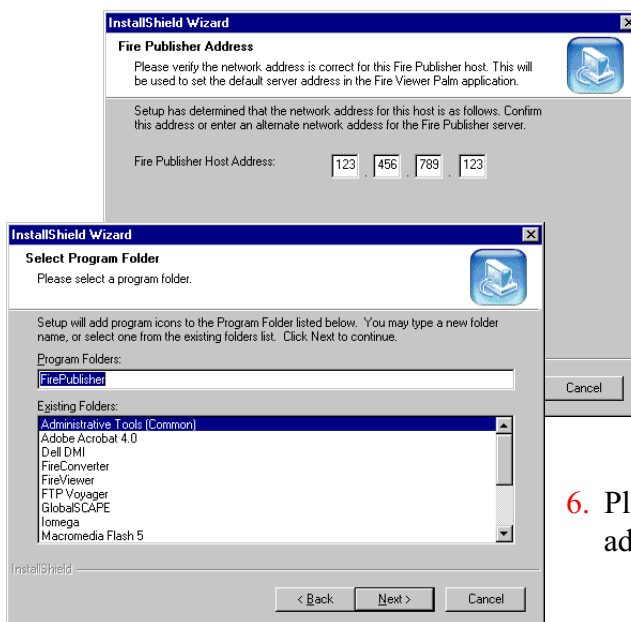
InstallShield

InstallShield guides you through installing FirePublisher to your computer. After installation, the FirePublisher service is started automatically.

Note: Uninstall older version before installing new version.

To install:

1. Insert the FirePublisher CD-ROM into your computer's CD-ROM drive.
2. Run the InstallShield Setup Program. (E.g. D:\\Setup.exe)

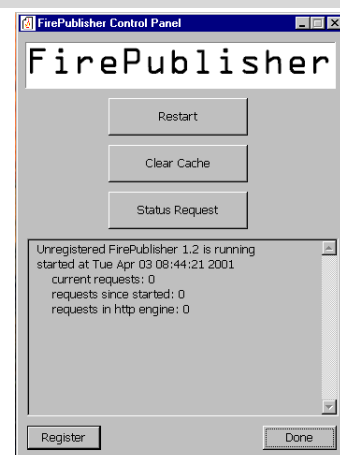


3. After a moment, a screen appears describing the installation process. Follow the onscreen instructions.
4. Choose a destination location where you want to install the FirePublisher files.
5. During setup, InstallShield detects the IP address of the system running the InstallShield application. Please confirm that the address is correct or enter a new one.
6. Please select a folder or create a new one to add FirePublisher to your start menu.

Note: InstallShield places the IP address of your server into the FireViewer application that is installed into the FireViewer Client folder. There is no need to change advanced configuration options in FireViewer when installing this version on your devices.

Note: Once installed, FirePublisher is fully operational and can access any URLs.

For convenient user based remote administration and to restrict URL access, you can optionally install web admin user interface.

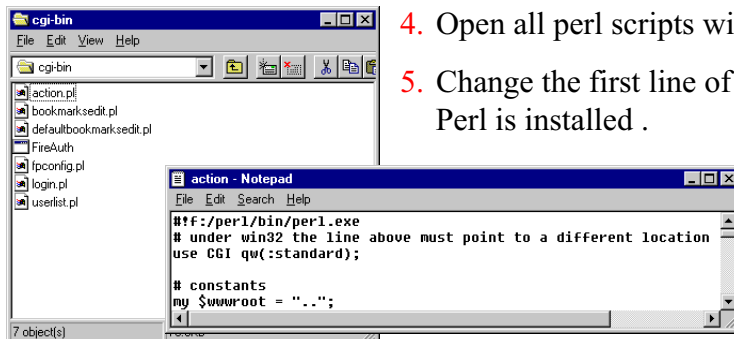
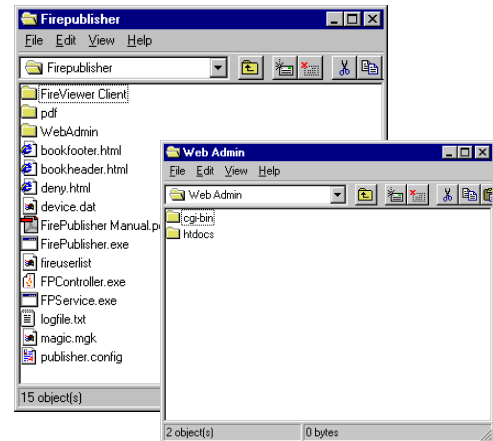


Web Administrator's Interface Installation

After you have installed the FirePublisher software, you can easily configure your server according to your needs. This section explains the setup for Apache web server. If you are not sure what web server you are using or how to adapt the following steps to different web servers, ask your local systems administrator.

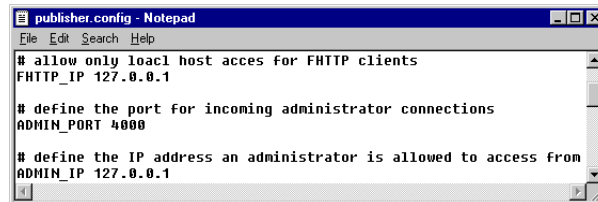
To set up your system:

1. Open the folder where you have stored FirePublisher files.
(C:\\Program\\Files\\Firepad\\FirePublisher)
2. Open the 'cgi-bin' folder within the Web Admin' folder.
3. Copy perl scripts (.pl) into the 'cgi-bin' folder of your web server.
4. Open all perl scripts with a text editor.
5. Change the first line of all perl scripts to the directory where Perl is installed.
6. Copy file 'FireAuth.exe' into the 'cgi-bin' folder.
7. Open the 'htdocs' folder within the 'Web Admin' folder.
8. Copy the 'Admin' folder into the 'htdocs' folder on your Apache web server.



To give access to the FirePublisher Administration from a different server:

1. Open the 'FirePublisher' directory.
2. Open the file named 'publisher.config' with a text editor.
3. Go to the line that states 'ADMIN_IP 127.0.0.1'.
4. Configure the web server's IP address.



Advanced Restriction

Access restrictions that can be set up with the web interface are explained in Chapter III. The 'publisher.config' file may be modified to globally restrict access of web pages, images or any kind of URLs. This overrides the User Profile configuration which is done by the web interface.

For example:

FirePublisher is deployed to access a corporate image database server named 'www.images.com'.

In order to avoid misuse of the FirePublisher service, you may restrict FirePublisher to transfer web pages from 'www.images.com' only. The 'publisher.config' file must contain a command line such as:



```
URL_REALM http://www.images.com
```

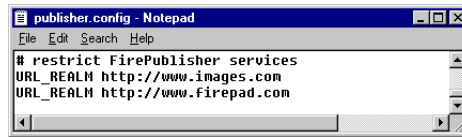
which allows access to all objects addressed by any URL that begins with the strings such as:

```
`http://www.images.com'
`http://www.images.com/index.html'
`http://www.images.com/private/family.gif'.
```

You can also have more than one 'URL_REALM' command in the 'publisher.config' file.

For example:

To allow access to 'www.images.com' and 'www.firepad.com':



```
URL_REALM http://www.images.com
URL_REALM http://www.firepad.com
```

If the 'publisher.config' file does not contain one or more URL_REALM commands, FirePublisher will allow the access to any URLs.

Tell FirePublisher to use a proxy

If you intend to install FirePublisher within an Intranet that restricts web access through a proxy, you will need to configure FirePublisher using that proxy. Do this by editing the configuration file. On the command lines, remove the “#” signs and enter your IP address and Port number.

User software generation and installation

The FireViewer Client folder contains the user software executable. This file can simply be emailed to the individual users to HotSync to their Palm device or the systems administrator (you) can HotSync FireViewer to all the Palm Devices.

III. Using FirePublisher Web Administration

In FirePublisher Web Administration you can check the status of the running FirePublisher, create user accounts and specify what content is accessible to the users. The user configuration is used only when you are running the FirePublisher in the Closed System mode.

- ❑ Web Administration
- ❑ FirePublisher Configuration
- ❑ User Profile Administration
 - User Profile
 - User Bookmarks

Web Administration

Once you have the FirePublisher running, open your web browser. Enter 'http://localhost/Admin' in the address bar.

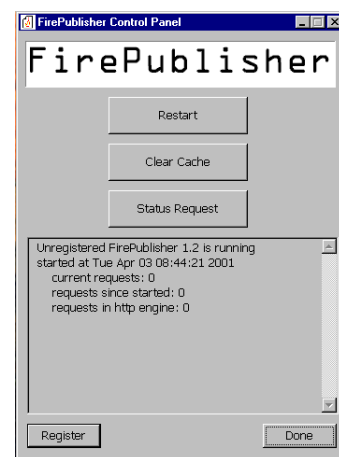
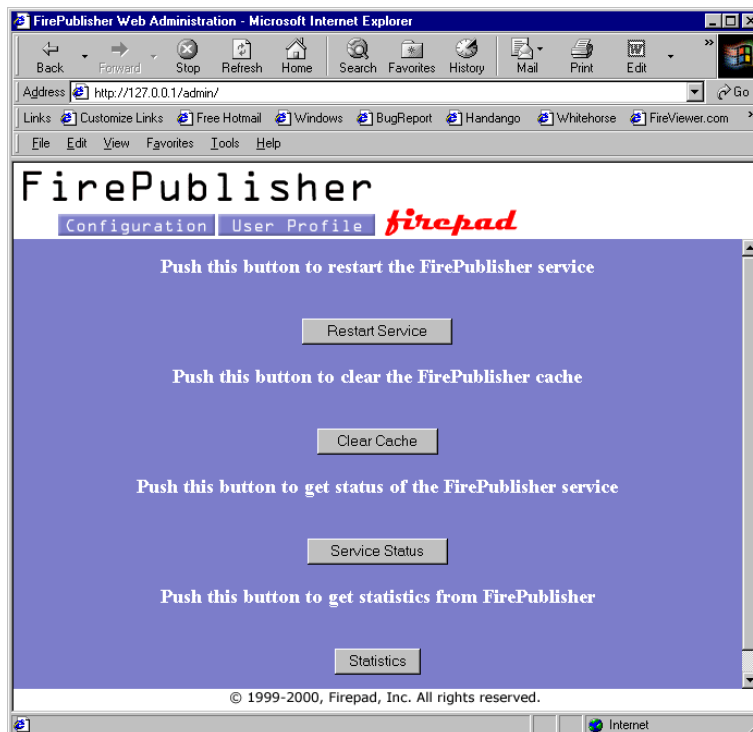
FirePublisher Configuration

- Restart Service— restarts the FirePublisher when configuration has been edited.
- Clear Cache – clears stored data.
- Service Status – returns information on current service.
- Statistics – shows information on requests made on service.

Note: In the FirePublisher folder, there is a Windows application called *FPController* which is an alternative method for controlling FirePublisher if you do not have the web interface installed.

User Profile Administration

This is where you set up your individual users with passwords, access to URLs and bookmarks. Enter username and passwords in the appropriate fields then click on the add button. The users will be listed in the User Profiles field. Highlighting a user name and clicking the remove button



will remove the user from the list.

The user will need to login on their handheld device with their username and password into the Advanced Configuration when they use FireViewer. The IP address of the server is generated into the FireViewer client when you install FirePublisher. Usernames and passwords are case sensitive.

i. User Profile

After you have entered all the users, highlight a user name and click the open profile button to get that user's detailed profile. You may allow or disallow particular URLs by entering the URL name in the URL Name field and clicking either allow or disallow buttons accordingly.

Examples:

To restrict access to limited URLs, enter 'http://url name/*' and choose the Allow URL button - this allows the user access to anything within this URL only.

Note: The User Profile configuration gets overridden if the Advanced Restriction is configured.



To allow all URLs, enter 'http://*' in the URL Name field.

You may edit these selections at any time and your changes will occur in real-time.

Note: You may use the asterisk "*" only at the end of a URL string.

ii. User Bookmarks

Highlight a user name and click the Open Bookmarks button to get to the Bookmarks Editor for that individual user. Enter the URL address in the



URL Name field and any desired description name in the Description field, and then click the Add button. The list of bookmarked URLs that appear in the list above will be bookmarked in the Palm device for this user only. These URLs can be accessed in FireViewer under the Bookmarks menu as My Links. Highlight My Links and tap the Go To button to download the user's bookmarked URLs.

IV. Using FireViewer

FireViewer defines the standard for viewing graphics and hypertext documents on Palm Computing Platform handheld devices. Use it to view scrollable color and grayscale images, pictures, maps, and diagrams. FireViewer's remarkable 360-Degree-Drag feature makes larger-than-screen images easy to navigate and intuitive to use.

- ❑ InstallShield
- ❑ Get Started
- ❑ Main View
- ❑ Main View Menu Items
- ❑ View Images
- ❑ View Hypertext Documents
- ❑ View Videos
- ❑ FireConverter and VideoConverter
- ❑ Where to Find Images on the Internet
- ❑ Create Custom Maps for FireViewer from the Internet

InstallShield

InstallShield installs FireViewer on to your computer. After the installation, HotSync FireViewer into your device.

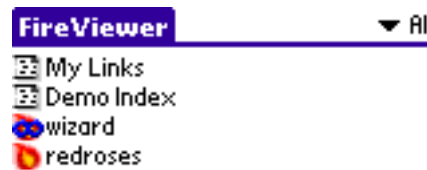
Get Started

From the Applications Picker, tap the 'FireViewer' icon to launch FireViewer. FireViewer always starts in the Main View.



Main View

FireViewer's Main View displays a list of objects that can be viewed. These objects can be images, hypertext documents or video. Tap and release on an entry name to view the entry. By tapping and holding on an entry in this list, you get a popup menu showing all the operations you can perform on that entry.



Edit Pop-up menu:

When using the Rename function, tapping the title bar will bring up the Edit Pop-up menu which allows you to undo (/U), cut (/X), copy (/C), paste (/P), select all (/S) as well as access the keyboard (/K) and graffiti help (/G).

This function is also available in Open Location and Advanced configuration from the Options menu.



Main View Menu Items

The following FireViewer menus are accessible from the Main View by tapping either the list menu button on the silk screen or if using Palm OS v.3.5, tap FireViewer title in upper left corner.

Info - Help (/H):

General help information

Info - About:

Copyright and version information

Options – Open Location (/W):

If you have a wireless connection, you can type a document address here to download, then press open.

Or chose My Links to access bookmarked links from your server.

Note: FireViewer is pre-configured to use standard TCP/IP as supported by OmniSky, GoAmerica, Symbol Technologies or similar wireless connection. To configure your Palm VII orVIlx for wireless use with FireViewer, please Appendix B.

Options – Switch Local/Removable:

This supports hardware with removable storage. To view FireViewer content on a removable media card, click “Switch Local/Removable” in the Options menu. To return to viewing content stored locally, click again.

Options – Preferences (/R):

Preferences are categorized in FireViewer 5.2. The pull down menu in the upper right corner accesses all categories.

Viewing Style:

Buttons Scroll - Set the distance for scrolling images by pixels when using the hardware's buttons to scroll.

Sort by Manual allows manual sorting of images by dragging them up and down the list. To drag, pen down on an image and drag it to the desired order and lift up the pen.

Sort by Alphabetic sorts images alphabetically. This sort order will overwrite the current sort order.

Link Style allows you to choose either dotted underline or solid underline to identify links.

Check 'Show browser arrows with local images' to have the use of the browser buttons on images not from the network.

Check 'Invert when backlight is on' to view images in reverse color scheme when backlight is on.

Registration:

Go to www.firepad.com/register to get the latest version of FireViewer for free and register to be notified of updates and new products.

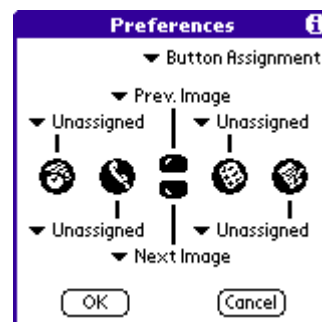
FirePublisher Setup:

Use to enter or view your FirePublisher IP address, user name and password.

Note: For PalmVII or VIIx, please see Appendix B.

Button Assignment:

The six hardware buttons on your handheld device can be assigned several tasks that will be performed when they are pressed while viewing or previewing an image. Unassigned buttons perform their original function. All buttons are returned to their normal behavior when you switch to another application.



If an image is larger than the display, Scroll Up, Down, Left and Right moves the image in the given direction. The amount an image is scrolled during a 'click' of a button can be adjusted. Scroll functions are not available when previewing an image.

Previous Image or Next Image: Move directly to the previous or next image in the image list without returning to the Main View. Alternately, write an 'A' in the graffiti area to go to the previous image or write a 'V' to go to the next image.

Set Anchor: Save the current scroll position. The scroll position can then be instantly jumped to by pressing the button that has been assigned the Go To Anchor function. Alternately, write an 'S' in the graffiti area to set an anchor position or write a 'G' to go to the anchor position. Anchor functions are not available when previewing an images.

View/Preview: Switch between viewing and previewing an image. Preview is not available for images that are the same size or smaller than the display.

Back: Return to the image list.

Data Handling:

Check 'Back up content' if you want your content saved on your computer in the backup folder during a HotSync. Be aware that transferring many large images will significantly increase the time it takes for a HotSync to complete.

Check 'Exclude from Find' if you don't want the Find function to search for text in any images.

Uncheck 'Use hardware-independent video methods (slower)' to display videos at a slightly faster rate.

Max Cache Size - Default is half the available storage memory.

Options – Restore Defaults:

Restores all preference items to default settings.

Options – Purge Cache:

HotSyned, downloaded and main entries can be purged separately by checking the appropriate boxes.

View – Bookmarks:

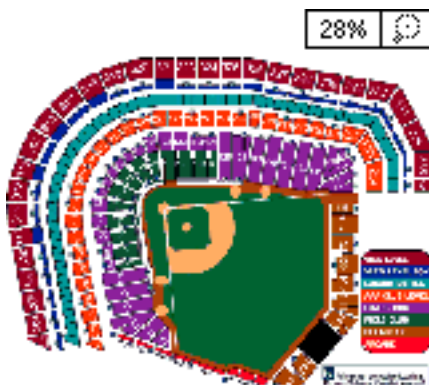
To view previously bookmarked images or hypertext documents.

View Images

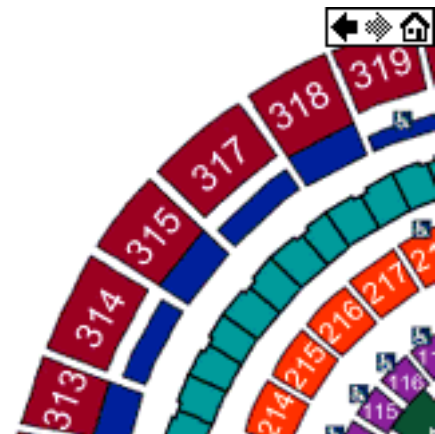
Images are indicated by a flame icon to the left. Tap and release the image name from Main View to view the image. Tap and hold the image name to get a popup menu with these entries: View, Rename, Delete, Beam, Details, Preview and Note (Reload is present in downloaded images).

If an image is larger than the handheld device's screen (bigger than 160 by 160 pixels), drag the stylus along the image to scroll it.

Just as on the main screen view, tapping or tapping and holding on an image causes a popup menu to appear with these entries: Preview, Delete, Beam, Bookmark, Details, Note and Home. Save (makes download image show up on the Main View and is immune to cache purges) and Reload appear only in downloaded images.



In preview mode, an image that is larger than the handheld device's screen (160 by 160 pixels) is scaled to fit entirely within the screen. From this mode you can "zoom in" in increments to view the image in greater detail simply by tapping on the image. Each tap causes the image to be scaled up one step, centered on the tap point. During preview, a pallet of two "zoom" buttons is available in the upper right corner. The leftmost button shows the degree of scaling as a percentage of the actual



dimensions of the image. Tapping this button causes preview mode to be exited, and the image to be returned to full size. The rightmost button performs a “zoom out” operation, i.e., it scales the image down by one step until you are at the smallest preview size.

The Image Details dialog box presents information about the image such as the Width, Height, Size and Type. You also have the option to change the image's category and set the image as private. (When the image is part of a hypertext document, those two operations are not available.)

Also, while viewing an image, tapping the menu icon on the silk screen will bring up the FireViewer menus. In addition to the Info, Options and View menus (described in the Main View Menu items section on pg. 20), there is a record menu with the following selections: Preview, Reload, Delete (/D), Beam (/B), Bookmark, Details, Attach note (/A), Delete note (/O) and Save.

There is a pallet of browser buttons available in the upper right corner to move back, forward and home. You must check the “Show buttons on local image” box in the preferences in order to see the browser buttons.

View Hypertext Documents

Hypertext documents are indicated by a document icon to the left on the Main View. Tap and release the document name from the Main View to view the document. Tap and hold the document name to get popup menu with these entries: View, Rename, Reload, Delete, Beam and Details.

All hypertext pages contain a pallet of browser buttons in the upper right corner. The available buttons are “Back”, “Forward” and “Home”, indicated by left arrow, right arrow and home icons respectively.

Just as on the main screen view, tapping or tapping and holding on a document causes a popup menu to appear with these entries: Reload, Delete, Beam, Bookmark, Details and Home.

The Hypertext Details dialog box presents information about hypertext pages appearing in the Main View. This information is the page's category and privacy settings, which can be changed. Note that for a page not appearing in the Main View, i.e. a page that is directly or indirectly linked to such a page, this dialog is not available.

View Videos

Videos are indicated by a Video icon to the left on the Main View. Tap and release the video name from the Main View to play the video. Tap and

hold the video name to get a popup menu with these entries: View, Rename, Delete, Beam and Details.

Just as on the Main View, tapping or tapping and holding on a video causes a popup menu to appear with these entries: Play, Pause, Restart, Delete, Beam, Bookmark, Back and Home.

The Video Details dialog box presents information about videos appearing in the main view. This information has the video's Frames/s, Size, Type, Skip, Category and Private. Skip is available only if the video was created with this option. Skip reads either "Yes" or "No". "Yes" means the Fast Forward and Rewind options are available and "No" means these options are not available for this video. The hardware's scroll up/down buttons perform fast forward and rewind respectively. The video's Category and Privacy settings can be modified in this dialog box.

FireConverter and VideoConverter

You can create your own FireViewer images and videos by installing FireConverter and VideoConverter to your Windows PC.

FireConverter

FireConverter converts GIF, JPG, BMP, RLE, TIFF and PNG. HotSync your converted images to your handheld device to view them.

Note: Because there are some variants of image file formats, you may not be able to convert some images. Save these images in Bitmap format and try converting them again.

VideoConverter

VideoConverter converts .avi and .mov formats. HotSync your videos to your handheld device once you've converted them to view.

Since VideoConverter uses the standard windows .avi support, which is an older format, it can only convert these types of avi. While you are in windows explorer, right click on the video, select properties and then select the details tab. If there is information displayed about the 'video format' then you can convert it to FireViewer format. If there is instead a message that says something about bad format, Video Converter cannot convert it.

Both can be downloaded from the product section of our web site at <http://www.firepad.com>.

Where to Find Images on the Internet

Many web sites offer FireViewer images, including:

MemoWare.com - a unique collection of thousands of documents.

PalmGear.com - the one stop source for your Palm connected organizer.

Handango.com - the complete source for handheld and wireless computing for business professionals.

Palmspot.com - A Catalyst for Handheld Technology.

Smaller.com - a big place for small devices.

Create Custom Maps for FireViewer from the Internet

There are several custom map creation sites on the Internet. Two of these are MapQuest (www.mapquest.com) and Lycos Roadmap (www.lycos.com/roadmap.html). They both create maps, which show up very well on the Palm device's screen without requiring any tweaking of the map's colors.

Once you have a map displayed on your web browser, save the map to your hard drive as a graphic file. With Internet Explorer, right click on the map and select "Save picture as...". With Netscape Navigator, right click on the map and select "Save image as...".

Use FireConverter to create a FireViewer image file (*.prc) from the bitmap file, then use the Palm Install Tool to install the image on your handheld. Perform a HotSync operation, and you're ready to go.

V. Appendixes

- ❑ FHTML Specification

This appendix contains information on a supported subset of HTML that FireViewer understands. The definitions may be useful for building your own web content viewable in FireViewer.

- ❑ FireViewer 5.2 Notes

- ❑ Support

Appendix A

□ FHTML Specification

FHTML support in FirePublisher 1.0

FirePublisher converts HTML documents that are stored on web servers into a specific binary format suitable for presentation in FireViewer. Due to the limited displaying capabilities, screen size and CPU power of palm devices, the supported markup language of FireViewer is less powerful than HTML. FirePublisher maintains the general readability of existing HTML documents, however, this does not apply to all existing HTML documents.

This document summarizes the supported markup and provides the details of how to adapt a web site in order to make it suitable for transferring and viewing with FireViewer and FirePublisher.

Paragraphs

Tags:

`<P>` and `</P>`

Formatting:

FireViewer will display a blank line after each paragraph.

Line Breaks

Tags:

`
` and `</BR>`

Formatting:

FireViewer will start a new line after parsing this tag.

Ordered and Unordered Lists

Tags:

``

``

``

Formatting:

If surrounded by , inserts a bullet and a blank character.

If surrounded by , inserts a number as e.g. (1), (2)...

Hyperlinks

Tags:

```
<A HREF= "url" >text</A>
```

Hyperlinks to other HTML and to images are supported. Hyperlinks to positions within a document are working; however, the relative position is ignored. Therefore the link

```
<A HREF= "http://www.firepad.com/index.html" >
text</A>
```

has the same result as

```
<A HREF= "http://www.firepad.com/index.html
#note" >text</A>
```

Formatting:

Hyperlinks are formatted as underlined text.

Images

Tag:

```
<IMG HREF= "url" ALT= "test" >
```

Formatting:

If an image tag is included in an HTML document that includes other HTML text or format specifications, the image will appear as a link to the image. The hyperlink text is built out of the text in the ALT attribute of the image tag. If there is no ALT attribute, it defaults to "<image>".

For example:

```
<HTML><BODY>
```

```
Here is an image <IMG HREF= "image.jpg"
ALT= "picture" > from our latest meeting.
```

```
</HTML>
```

results in

Here is an image picture from our latest meeting.

If there is no other HTML format or text in the current page, the image is shown instead of the HTML page. This mode is of particular importance because it allows the usage of Image Maps.

Image Maps

In HTML, documents that do not include any text or text specific format definitions; a single image tag can be used in conjunction with an image map.

Tags:

```
<IMG SRC= "url" USEMAP="#name">
```

This tag is a link to an image. The USEMAP attribute is optional, but when present, it refers to a previously defined client-side image map.

```
<MAP NAME= "name">
```

```
<AREA SHAPE="rect" COORDS="x1, y1, x2, y2"  
  HREF= "url">
```

Clicking on the areas defined in the image map will load the URL specified with HREF.

Only rectangular shapes are supported.

Frames

Tag:

```
<frame src= "url" name= "name">
```

Formatting:

If frames are included in a document, they are displayed in the sequence as they appear. This is the same as filtering out the frame tags. If a frame is not included within the document and instead referenced by the "scr" attribute, the frame is converted to a link. The link text will be the next text that is given in the "name" attribute. If there is no name attribute, the name defaults to "<frame>".

Title

Tag:

```
<TITLE> and </TITLE>
```

Usage:

The title will be used for displaying the hyperlink in the object repository of FireViewer. A unique and good name supports simpler content access at the Palm client.

Base

Tag:

```
<Base href= "URL ">
```

Usage:

The base tag may be used to identify the name space of the URLs included in the document.

Entities

FHTML supports the entity references that are defined in the HTML 4.0 specification in section 24.2.1 (The list of characters). Basically this includes the common international characters as well the most common symbols. The characters are defined in ISO 8859-1 (Latin-1). In accordance with section 14 of [RFC1866], the set of Latin-1 entities has been extended by this specification to cover the whole right part of ISO-8859-1 (all code positions with the high-order bit set), including the already commonly used ` `, `©` and `®`. The names of the entities are taken from the appendices of SGML (defined in [ISO8879] <../references.html>).

Other non-recognized tags

FirePublisher filters out all other tags that are not mentioned in this document. Contents in between start and end tags, not defined as textual information, will be filtered as well.

For example, content that is stored in tables will be visible, but the format will be different than given by the table structures. In contrast, text that belongs to Java scripts or cascading style sheets will not appear at all.

Appendix B

□ FireViewer 5.2 Notes

Internet and FireViewer 5.2

Please note your cache from downloaded objects will be purged when you upgrade to FireViewer 5.2 from an earlier version. Images and videos installed via HotSync or beaming will not be affected.

Palm VII or VIIx and FireViewer 5.2

Please be aware that FireViewer allows you to download much larger objects than you normally receive through your wireless connection. If your Palm.net account has a bandwidth limit, you will likely exceed it and incur costly overage charges if you browse more than a few pages with FireViewer.

In order to use your Palm VII or VIIx wireless connection with FireViewer, you must adjust your FirePublisher Setup preferences. To do so, launch FireViewer, and tap on the menu icon. Tap the "Options" menu; select the "Preferences..." menu item. Tap on the pull-down menu and select "FirePublisher Setup". In this pane, make sure the text under "Server:" is "www.fireviewer.com:5500" or "www.fireviewer.com", and check the box next to "Palm VII Wireless Network". When done, tap the "OK" button. You should now be able to use your Palm VII or VIIx wireless connection with FireViewer.

The responsiveness and speed of download functions through the Palm VII wireless network is dependent on the availability of Palm's proxy servers. You will notice dramatically improved service if you browse at off-peak hours, particularly after 6:00pm Pacific Standard Time on weekdays.

Memory Card and FireViewer 5.2

FireViewer 5.2 now supports removable storage media on devices that implement the FAT 12/16 file system. This includes devices such as the Sony Clie with Memory Stick technology and the new Palm OS 4.0 Virtual File System. Devices implementing incompatible file systems are not supported (e.g. the TRGPro).

To prepare removable media for use by FireViewer, format it using your handheld device, and then mount it on your desktop as a volume using a removable media reader. Next, use standard desktop file system opera-

tions to create the directory “/Palm/Programs/FireViewer” and any subdirectories of it that you want, and then place FireViewer content in these directories. You can create FireViewer content using FireConverter and/or the FireViewer Conduit.

To view content, insert the removable media in your handheld, launch FireViewer, and then use the “Switch Local/Removable” menu item found in the “Options” menu. Alternatively, you can launch FireViewer first, and then insert the media - FireViewer automatically displays its contents. To return to viewing content stored locally, use the “Switch Local/Removable” menu item again, or eject the removable media.

FireViewer displays content on removable media in a manner similar to desktop file system browsers. The display shows FireViewer content (images, videos and hypertext pages) and directories. A web site that has been written to removable storage via the FireViewer Conduit is stored in a directory with a name derived from the site's URL, where the home page of that site is in a file named “index.pdb” within that directory.

To navigate the directory hierarchy, simply tap on a directory entry to display the contents of that directory, or tap on the directory icon in the upper right corner of the display to return to the parent directory of the directory you are viewing. Use the popup menu located next to the directory icon to navigate directly to any directory in the current path. To view content simply tap on its entry in the display.

Appendix C

□ Support

Post your questions or comments concerning FirePublisher at <http://www.firepad.com/forum>.

Visit the [Products web page](#) for the latest FirePublisher utilities, information and answers to frequently asked questions.

Firepad, Inc.
The Firepad Building
625 Ellis Street
Mountain View, CA 94043

