



Fi rePr oducer Desk top

Installation Manual and User's Guide

firepad



Firepad, Inc

Information in this document is subject to change without notice. No part of this document may be reproduced or transmitted in any form or by any means, electronic or mechanical, for any purpose, without the express written permission of Firepad, Inc ("Firepad").

© 2000 Firepad, Inc. All rights reserved.

Firepad, FireProducer and FireViewer are either registered trademarks or trademarks of Firepad, Inc. in the United States and/or other countries.

Firepad may have patents or pending patent applications, trademarks, copyrights or other intellectual property rights covering subject matter in this document. The furnishing of this document does not give you any license to these patents, trademarks, copyrights or other intellectual property rights except as expressly provided in any written license agreement from Firepad.

Palm, Palm Computing Platform and HotSync are trademarks of Palm, Inc.
Sony and CLIE are trademarks of Sony Ltd.
Handspring, Visor and Prism are trademarks of Handspring, Inc.
TRG and TRGPro are trademarks of TRG, Inc.

Contents

I. Introduction	4
About Firepad	5
What you get	5
System requirements	5
II. Installing FireProducer Desktop	6
Installation Procedure	7
III. Using FireProducer Desktop	8
File Source	9
Camera Source	9
View Source Video	10
View Server Video	10
Configure Quality	11
Connect to FireProducer	11
Firewall	12
IV. Appendixes	13
A. Frame Grabbing Hardware Compatibility	14
B. Support	15

I. Introduction

FireProducer enables video streaming to a PalmOS handheld device connected to the Internet. It is the only server application for streaming media to PalmOS devices. Both live and stored video on the Internet or a corporate Intranet - movie trailers, production dailies, animations and webcams - can now be streamed to a handheld device. FireProducer can be used for surveillance purposes, corporate news and training broadcasts, media and entertainment companies and more. FireProducer brings unexpected video functionality to the Palm, opening up new markets and taking video data beyond desktops and laptops. Firepad provides both consumer desktop and enterprise grade servers for streaming media.

- ❑ About Firepad
- ❑ What you get
- ❑ System requirements

About Firepad

Founded in 1997, Firepad is based in the heart of Silicon Valley. As a pioneer in the delivery of multimedia to handheld devices, Firepad has the de facto standard for two-dimensional large images, video and text on the Palm Computing Platform. Our award-winning technology is used by publishers, document-intensive organizations, original equipment manufacturers, business users and consumers and is endorsed by leading enterprises worldwide.

Our products include FireProducer, FirePublisher, FireConverter and FireViewer.

Firepad, Inc.

The Firepad Building

625 Ellis Street, Suite 100

Mountain View, CA 94043

What you get

- FireProducer Software
- Manual
- The ability to convert and transmit films and videos out to handheld devices.

System requirements

The following is required to run FireProducer 1.7.

- Windows 95/98/NT/2000/ME
- 32MB RAM
- Frame Grabbing Hardware to do live video streaming. (Optional)

Handheld devices supported:

All Palm OS devices, including units from Franklin Covey Co., Hand-spring, IBM, Palm, Qualcomm, Sony, Supra Products, Symbol Technologies, TRG Products and QUALCOMM, running PalmOS v.3.0 or later releases.

Device client software:

FireViewer 5.0 or above

PalmOS 3.0 or above

II. Installing FireProducer Desktop

This section contains information on installing and configuring FireProducer to your system.

- ❑ Installation procedure

Installation Procedure

InstallShield guides you through installing FireProducer to your computer. After installation, the FireProducer service is started automatically.

To install:

1. Insert the FireProducer CD-ROM into your computer's CD-ROM drive. Or if you downloaded FireProducer, proceed to step 2.
2. Run the InstallShield Setup Program. (e.g. D:\Setup.exe)
3. After a moment, a screen appears describing the installation process. Follow the onscreen instructions.
4. Choose a destination location where you want to install the FireProducer files. You may select a folder or create a new one to add FireProducer to your start menu.

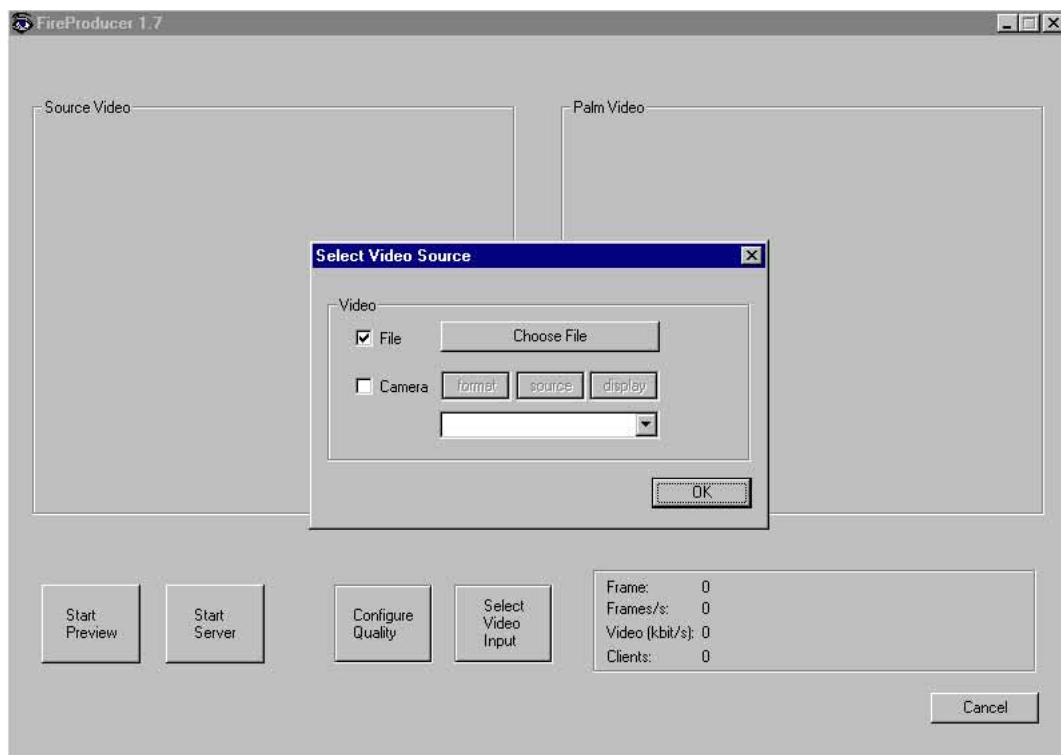
III. Using FireProducer Desktop

- File Source
- Camera Source
- View Source Video
- View Server Video
- Configure Quality
- Connect to FireProducer
- Firewall

Once you have FireProducer running, you will see two windows for video. The source video appears on the left and the palm video on the right. To start running your video, click on the “Select Video Input” button which is located below the windows. The Select Video Source dialog box opens. Choose the source of your video by checking either the box for File or Camera.

File Source

After checking the box for file, click the “Choose File” button to locate the video source from your computer. Select the .avi video then click open. The name of your video will now appear as the name of the button. Then click OK.



Note: At the time of this writing, FireProducer supports the standard windows .avi format. Future releases will support more video types.

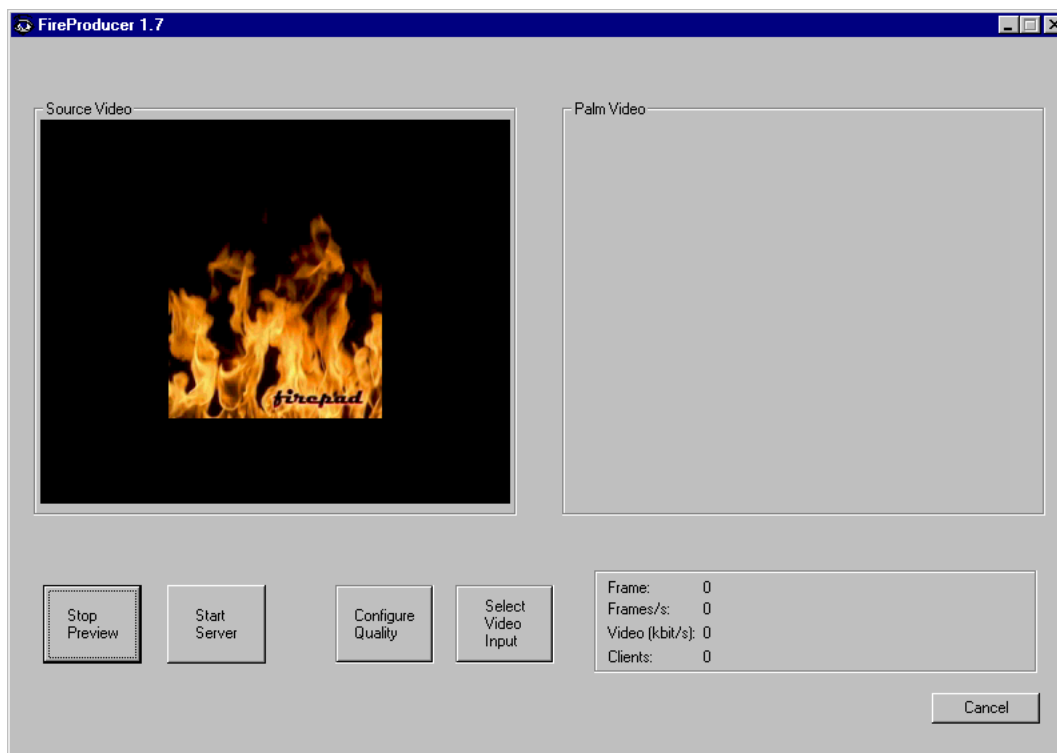
Camera Source

If you have a camera and frame grabbing hardware installed on your PC, you may check the box for camera and choose the desired capture device from the pull down menu, then click OK.

Note: If you are experiencing difficulty with your frame grabbing hardware working together with FireProducer, you may need to manually configure hardware specific parameters. FireProducer supports frame-grabbing hardware that supports Common Interchange Format (CIF). Click the Format button located to the right of the camera check box within the Select Video Source dialog box. Set the screen size to 352 x 288 pixels (CIF mode) and 16-bit RGB. If your frame grabbing hardware does not support that mode, it will not work with FireProducer.

View Source Video

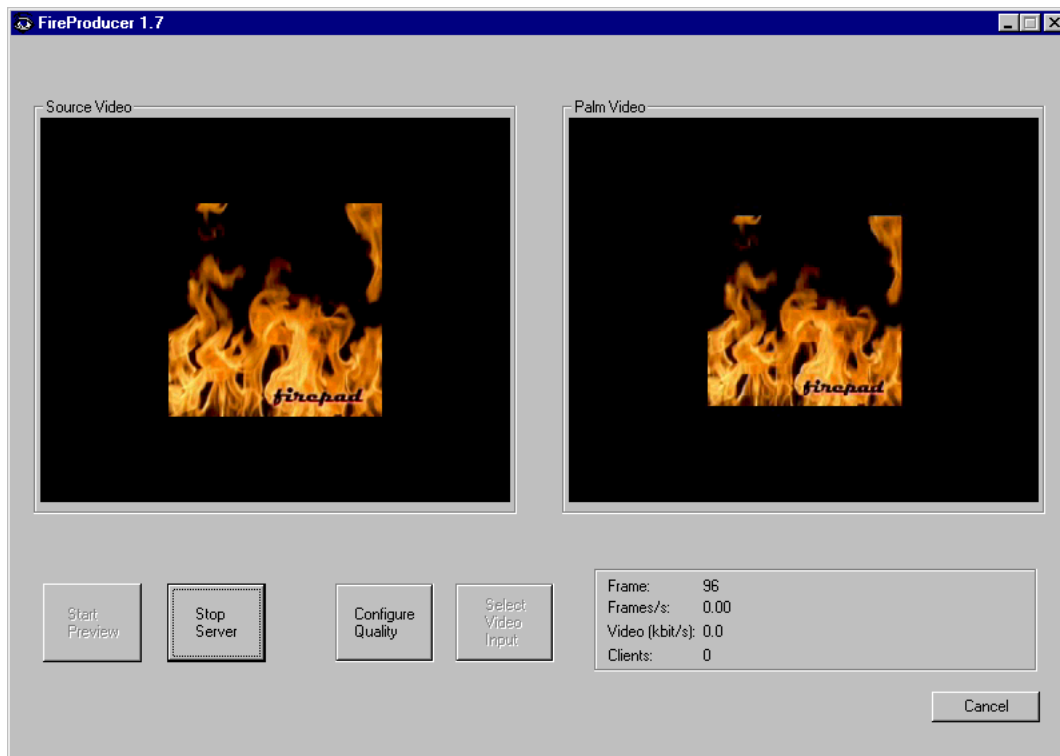
To view your video, click the Start Preview button located on the left and your video will now play in the Source Video window. Notice that while the video is playing the name of the Start button changes to Stop Preview.



View Server Video

To view your video in the Palm Video Window, click the Start Server button. The 160 x 160 pixel area visible on a handheld device is highlighted in the Palm Video Window.

While the server is running the video in the Palm Video window, information about that video is displayed below the window. Frame will tell you



how many frames are generated. Stopping and restarting the video will restart this number. Frames/s is how many frames per second this video is displaying on the receiving Palm device. Video (kbit/s) is the data transferred to the PalmOS handheld in kbit/s. Clients reveals the number of users logged on.

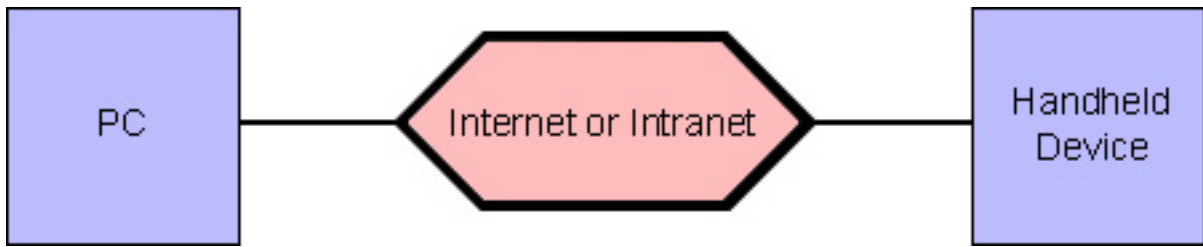
Configure Quality

Once you have the video running in both windows, you may now configure the quality by clicking the Configure Quality button. The Adaptation dialog box appears. Use the sliding scales to select the desired quality detail and size. Click the update button to view the changes in the Palm Video Window.

Note: decreasing the quality will increase compression and frame rate. Shrinking the size of the input video will allow more of the video to be viewable on the handheld device.

Connect to FireProducer

To connect your PalmOS handheld to FireProducer, it must have a connection to the Internet or an Intranet while your PC is also connected to the network.



Once your handheld is connected, launch FireViewer. Tap the menu icon on the device. In the options menu, select Open Location. The Open Location dialog box appears requesting a document address. Enter FTSP://*enter your IP address or host name of the computer running FireProducer*. You should now see your video on your handheld device.



FireWall

If FireProducer is installed behind a Firewall and the handheld devices have to go through the Firewall in order to connect to FireProducer, then the Firewall must be configured to allow TCP/IP communication on Port 4712.

V. Appendixes

- ❑ Frame Grabbing Hardware Compatibility
- ❑ Support

Appendix A

□ Frame Grabbing hardware Compatibility

In order to get FireProducer running with a capture/frame grabbing hardware to allow streaming originating from a camera, the installed capture/frame grabbing hardware needs to support a video picture size of 352 x 288 and 16-bit RGB. Most of the existing hardware does support that mode. However, some products may exist that deliver drivers that do not allow this configuration. Also, there are some products that cause unexpected behavior implementing the standard windows video interface.

Frame Grabbing Hardware Compatibility

We have tested the following frame grabbing hardware for compatibility with FireProducer. At the time of this writing, these are the known compatible hardware. If you do not see yours in the list, it may or may not be compatible, just not tested.

WINNOV Videum

ELSA Erasor

Elsa Office 2000

Elsa Synergy

Hauppauge WinTV

Matrox Millenium

Matrox G400-TV

The following USB Cameras have also been tested:

TerraCAM USB

Logitech QuickCAM

Appendix B

□ Support

Post your questions or comments concerning FireProducer at <http://www.firepad.com/forum>.

Visit the [Products web page](#) for the latest FireProducer utilities, information and answers to frequently asked questions.

Firepad, Inc.
The Firepad Building
625 Ellis Street
Mountain View, CA 94043

